



March 2024 Calendar

Mon., Mar. 4, 10:00

Insect Committee, Annex

Tues., Mar. 5, 9:00-Noon

Greenhouse Crews

Wed., Mar. 6, 1:00-4:00

**Pruning Japanese Garden, DG**

Sat., Mar. 9, 9:00-3:30

**Spring Into Gardening, Phoenix School**

Sunday, March 10

**Daylight Savings Time begins**

Tues., Mar. 12, 9:00-Noon

Greenhouse Crews

Wed., Mar. 13, 10:00

Executive Board Meeting, Annex

Mon., Mar. 18, 10:00

Insect Committee, Annex

Tues., Mar. 19, 9:00-Noon

Greenhouse Crews

Thurs., Mar. 21, 10:00-Noon

**Seeding Tomatoes, Pavilion, DG**

Tues., Mar. 26, 9:00-Noon

Greenhouse Crews

Thurs., Mar. 28

Continuing Education (9:00)

Chapter Meeting (10:00)

Sun., Mar. 31

**Easter Resurrection Sunday**



The Prez Sez...

The talented, enthusiastic volunteers in our membership are a never-ending story. Each person brings a special keen passion for an aspect of gardening that they express in their own individual ways.



Julie Burchstead (MG 2022) is the perfect example of a gardener's commitment to sustainable gardening. Her interest is restoring native host plants to our gardens to feed and nurture native pollinators and birds.

Julie taught primary school until she attained her masters degree as a literacy specialist. She and her husband had large rural parcels in Vermont and northern Oregon before retiring to Douglas County. They downsized to a smaller property with a lovely ornamental garden. It is a crowded household with 4 dogs, two with special needs, and a horse who is not allowed in the back yard!

The sequestered year before she took MG training was spent doing a lot of reading. Doug Tallamy, entomologist and author of "Bringing Nature Home", inspired her to champion the native plant losses in home landscapes. She learned that when gardens are planted strictly for beauty, they form food deserts for native insects. The loss of understory plants in replanted forests leads to loss of plants that support pollinators, insects, bees and birds. Julie found in her own garden that she could improve her plant diversity without removing all the hybrid ornamentals. In doing so, she has noticed a marked increase in bumble bees in her yard.

As a retiree, Julie has honed her creative skills and is "dabbling" in artwork. To that end, she accepted my challenge to make new artwork for the posters in the pavilion in the Discovery Garden. They are eye-catching and educational and so very clever. Our new posters are hand made of painted cut paper glued into a collage. She has also joined the "Ask a MG" team and has written a number of interesting articles for the News-Review.

Julie's enthusiasm for improving the large milkweed garden in the butterfly garden has been a labor of love. The much needed revisions show her depth of knowledge and hard work. Thank you, Julie, for the great work you are doing to improve our educational outreach! See you in the garden.

Julie Stanbery

## Treasurer's Report

01/08/24-02/12/24

Dawnetta Loomis



*Pavilion*

*Posters*

*by*

*Julie*

*Burchstead*



### INCOME

Bank Income	\$47.05
Plant Sale	\$1,460.89
Membership Dues	\$1,400.00
Donations	\$36.06
<b>TOTAL INCOME</b>	<b>\$2,944.00</b>

### EXPENSES

Administration	\$57.43
Class Fee	\$100.00
Mower Repairs	\$1,006.70
HLC	\$306.78
Propane	\$1,064.10
Utilities	\$1,436.91
Compost Soil Sifter	\$10.47
Plant Sale	\$3,645.30
<b>TOTAL EXPENSES</b>	<b>\$7,627.69</b>

### Breakdown of our accounts at 02/12/24

NWCC - Checking	\$1,615.85
NWCC - Reserve	\$5,014.49
NWCC - MMK Savings	\$62,309.14
NWCC - 6 Month CD	\$17,954.45
Charles Schwab - Waddington Fund	\$69,854.46
<b>Ending Balance</b>	<b>\$156,748.39</b>

### Postscript from the Prez:

Julie B's. interest in milkweed inspired me to learn more about this amazing plant. My newest favorite book is "The Milkweed Lands, an Epic Story of One Plant, It's Nature and Ecology" by Eric Lee-Malder. This beautifully illustrated book is chock full of interesting history and practical information about the milkweed. Of particular interest are the numerous insects that have a relationship with the plant. It follows the story of re-introducing a native plant which brought about the incremental return of animals such as small quail and butterflies and eventually larger beasts such as coyote and deer to what had been a barren area. Incredibly inspiring!

Stones painted as strawberries when put around strawberry plants in the spring will keep birds from eating your berries once they ripen....because the birds will think the ripened berries are stones.



Shared by Kish Doyle

**CELEBRATION 2023 - FEB. 4, AT SUTHERLIN COMM. CENTER  
(PHOTOS BY F.ALLEY & B. COURTER)**



We met together to celebrate all the wonderful things DCMG's did in 2023. Of course, there was lots of delicious food....



as well as socializing and renewing friendships - old and new.



Logan presented a great slide show showing all the accomplishments we've done over the past year, followed by a fantastic re-telling of John Panches's climb of Denali in 2000.



Julie was honored with 2 fabulous Leap Year birthday cakes thanks to Dawnetta.





## Swinger Bar Report Kay Livermore

Members who have swinger bar updates for January:

100 hours: Sarah Davis

1000 hours: Earnest Amabisca

5500 hours: Chris Rusch

Members who have year bars or updates through  
December 2023:

5 years: Christian Andino, Sylvia Andino, Julie Bell,  
Debbie Bishop, Cheryl Caplan, Jennie  
Compton, Darrell Dollens, Larisa Dollens,  
Jack Finney, Gordon Fleig, Chuck Goodin,  
Dawnetta Loomis, Brian McCrea, Robin Oki,  
Kim Pleich, Larry Rich, Bobbi Schneider,  
Mary Ann Shea, Jan Turley, Jan Wildey

10 years: Anne Bacon, Ivor Chapman, Kish Doyle,  
Bonnie Durick, Karen Glatz, Bruce Gravens,  
Kathy Hart, Steve Hart, Marsha McLain

15 years: Beth Brown, Carol Dalu, Neal Meyer, Tami  
Morin, Barbara Robinson, Gale Robinson,  
Toni Rudolph

20 years: Janet Bitter, Jean DeCato, Debbie Fenzl,  
Doug Holloway, Jon Thran

## Spring Into Gardening Chris Rusch

Don't miss our "Spring into Gardening" event on  
Saturday, March 9, 9 AM- 4 PM at the Phoenix Charter  
School in Roseburg. Registration is now open. The cost  
is \$25 per person. Discover practical approaches to  
vegetable gardening, improving garden soil, succulents,  
grafting, dahlias, growing spices, container gardening,  
garden tools, seed saving, and so much more. Master  
Gardeners can earn 5 credit hours towards  
recertification.

Be sure to register for the OSU Extension and Master  
Gardener SPRING INTO GARDENING event  
scheduled for March 9. Visit our website at: [https://  
extension.oregonstate.edu/county/douglas/events](https://extension.oregonstate.edu/county/douglas/events)

If you would like to volunteer to help with this event,  
send an email to Chris Rusch at  
[crusch3837@gmail.com](mailto:crusch3837@gmail.com). If you have already signed up  
to volunteer THANK YOU!



The Plant Clinic was surprisingly  
busy in February. We answered  
over 40 emails, phone calls and  
questions from visitors. We  
focused on training for our new  
group of volunteers this month.  
Many insects, plant identification  
and garden questions continue  
to come in.

We are lucky to have a great training team for 2024 with  
Leo Grass, Gerry Crane, Ken Parry, Diane Smith-  
Lewsadder, Doralee Hayden, and Chris Rusch. A BIG  
thank you to all of you who regularly work at the Plant  
Clinic!

Speaking of our talented training team, we are always in  
need of new volunteers and alternates to step up and  
take on this challenging and important position on our  
Plant Clinic training team. We need veterans to help in  
the Plant Clinic both in continuing to help our new  
volunteers and keeping up with the workload of  
assisting our visitors to the Plant Clinic. I realize we all  
have very busy lives, but I encourage each of you to  
take time, look at your calendar and pick just one  
afternoon each month and give the office a call and sign  
up. The Plant Clinic is where we give service as part of  
our Master Gardener obligation to our community.  
Please try to volunteer your expertise at least once a  
month to help in this important outreach program. The  
Plant Clinic is a great way to promote our Master  
Gardener Program and encourage sustainable  
gardening in Douglas County. And besides, it's a fun  
way to get to know fellow MG's as well as a chance to  
learn new things!

Call me or send an email if you are interested;  
[crusch3837@gmail.com](mailto:crusch3837@gmail.com) or 541-825-3827.





The Spear Head Senecio comes from Africa like many succulents, but can now be found in many countries around the world. They are mostly found in the rain forests, deserts and grasslands,

where they have learned to adapt to those climates.

The word “Senecio” means “old man”, as the seeds to these plants tend to look like an old man with hair. It belongs to the Asteraceae family, one of the largest genus with about 1,250 species. These succulents bloom in many different colors from yellow, pink, white and purple. The Spear Head blooms in summer with clusters of yellow flowers, attracting many beneficial insects to the garden. Don't we all love the bees in our garden?

This succulent is not one of the most popular ones that fly off the shelf. It's beauty I think, comes from the plant's leaves. It has oddly shaped leaves that look like a spear head or reindeer antlers. It can grow to 2 feet tall if allowed to, but many like to maintain the shape of it by pruning it back as it gets to big. The cuttings can be used to start many more plants by using some rooting hormone and potting up in a small pot.



You must be careful not to put this plant in full sun as it will burn the leaves and dry the plant out, possibly causing it to die. Finding it a shaded spot or part sun to part shade would be best. It would be good in a garden pot or hanging basket on one's shady porch. Water it about once a week in the summer months.

When a chance of freezing temperatures comes, it is best to bring it in doors or into a closed area like a greenhouse or garage. If brought indoors, do not put it near any heat source. Find the best sunny area in your home with good indirect light. If you do not have an area in your home and have a garage, it will survive there as

it can take temperatures to 30 degrees. Cover with a frost cloth if you are not sure it will survive.

In the late fall and winter months, like many succulents, they go dormant. At this time cut off almost all watering to the plants. Do not fertilize any succulents in the winter months either. With most succulents you can fertilize about 3 times a year, starting in the early spring to summer but never in the winter months. My rule of thumb for watering my succulents that are in my greenhouses is that they might get watered once a month, but not to the point of over watering them. This will only cause them harm.

Funny! I tell my succulents after I close up my greenhouses in November, “See you in January - you're on your own.” There are always a few that are mad at me. OK, they are dead. They just weren't tough enough. Then the fun begins all over again.

Until I see you in the garden.



## MARCH GARDENING CALENDAR

- Practice preventive pest management. Apply horticultural oils now before bud burst.
- Plan your vegetable garden. Plant cool season crops such as peas, lettuce, spinach, and kale.
- Spread compost over the garden and landscape areas.
- Prune spring flowering shrubs after blossoms fade.
- Plant berry crops.
- Fertilize rhododendrons, camellias and azaleas with acid type fertilizer.
- Protect new plants from slugs.
- Start rose blackspot control beginning at bud break.
- Register for “Spring into Gardening” on March 9!



Spring is almost here!! Enjoy the season.



## Ask the Tool Man Alley

Judging from the calls and requests I have received during the last several months, a number of Master Gardeners are getting ready to prepare their gardens and taking an inventory of their yard and garden tools. While I have prepared a few articles on how to easily remove broken shovel, hoe and other tool handles, I feel compelled to prepare yet another. I say this, as I have received a number of calls telling me how difficult it was to remove the shovel handle, or that the blade was damaged in the process. Neither of these circumstances should occur.

So, **what is the easiest method to remove broken shovel and hoe handles?** While my method is somewhat unorthodox, it really works. The four photos illustrate three different ways to easily remove broken handle, with only a few basic tools.

Photo #1 illustrates the need to first remove the 7/16-inch pin from the collar on both the shovel and hoe if there. This pin, (sometimes two pins on heavier contractor shovels) must be removed before attempting to remove the handle. (Most hoes do not have pins.) Using a pointed metal punch, strike the center of the pin to create a small indentation. This small indentation will serve as a center hole for a 7/16 drill bit. Drill downward until the head of the pin is removed. Then, use a nail punch to drive the pin down through the shovel collar. When you have at least an inch of the pin showing on the back side of the collar, remove the pin using a claw hammer or pry bar.



Photo #2 illustrates how to remove a shovel blade from the handle. This process requires a heavy vise. Note, I have already removed the shovel pin from the shovel collar. The first step in this process occurs the day before you start to remove the broken handle. Grab the shovel by the handle, placing the handle downward, exposing the back of the shovel.



You will see the end of the handle pointed up into the collar. Generously spray oil (W-D 40 or gun oil) down into the collar. This will lubricate the area between the collar and the handle, making it easier to remove the handle the next day.

Place the shovel handle firmly into a vise. Using a long metal punch, sized slightly less than the end of the wood shovel handle, drive the wood handle out of the shovel blade. This may take several strong strikes, but eventually the wood handle will gently loosen, and the handle will slide out of the collar.

Photos #3 and #4 illustrate my unorthodox, but proven method in removing broken shovel, hoe pitchfork, rake handles and other handles from garden and yard tools. This method requires **ONLY ONE TOOL**: a sledgehammer, or in my case a wood splitting maul. Oh, yes, the most important thing you will need is a vehicle. Just as I described under Photo #2, generously spray W-D 40 or gun oil down into the shovel or hoe collar. Again, this lubrication loosens the bond between the collar and the broken handle.



Place the end of the shovel or hoe handle in front of your vehicle tire. Place the other end of the shovel or hoe on top of a piece of 4"x 4" leaving at least 12" between shovel step and the 4"x4". Place a piece of 2"x 6" next to shovel step. With the aid of your partner or neighbor, have the partner drive slowing onto the shovel or hoe handle about six inches. Drive onto the handle just enough to secure the handle. Covering the handle too much will cause breakage of the handle. Using the sledgehammer or equivalent tool, strike the 2"x6" forcing off the shovel blade. This will generally require only 3-4 strikes. Easy, quick and efficient. Removing the hoe blade is even easier. In this case I only wanted the nice long oak handle. Even though the concrete hoe was heavy duty, the blade came out with only two strikes. Of course, I recycle my unused metal parts to a local metal art maker. It will make a great looking owl face.



Let me know of your success. If you have problems, or removing the broken handle does not work, please feel free to call me for assistance. You can also bring the shovel to the Discovery Garden on any Tuesday morning. I'm usually there between 9:30 and 11:00.

Happy gardening and continue keeping those garden and yard tools clean, sharp, oiled and stored.

---

### *Scribblings from the Little Free Library*



Thank you so much for installing this little book library in the garden. Our family loves to pull out a book and read while we spend sometime in the garden together. Many blessings to you!  
-The Guthrie's

Madeline (4) and Quincy (1) came to explore on a beautiful sunny day. Hopscotch and reading on the bench were a big hit! Thank you for a lovely place to visit!



## Plant Sale

Karin Seder/Joy Keeling

We are moving closer to the Plant Sale with lots happening with each of our Committee Chairpersons.

Everyone is invited to use our online sign-up to hold your volunteer space(s) on the Friday and Saturday of our Plant Sale. If you are not particularly comfortable signing up online, contact myself or Janet Bitter and we can help you through the process. It is so very important that we have your commitment to help – the success of the Plant Sale depends on our volunteers – and that means you!

Reminders will be sent out on a regular basis, but you can beat the rush and sign up following the link at the end of this article.

Sign up for a shift at the Plant Sale to volunteer on Saturday and you not only help your organization pull off the best plant sale in the county, you get free admission. Otherwise, the admission for anyone over the age of 12 is \$3.00.

In addition to our big volunteer days on May 3 & 4, here are some other dates you will want to mark on your calendar: **Thursday, April 25**, from 1-3 and **Sunday, April 28**, from 1-3 will be the "Master Gardener Only" plant sale out at the greenhouses. The Thursday sale is after the April chapter meeting. For the MG's and especially the new MG's, this sale is for Master Gardeners only and gives us all first dibs on the wonderful plants available before the public even gets to see them. There isn't a discount, just first dibs and the opportunity to shop without the crowds. Buy early and free up your time to volunteer at the Plant Sale! Both pre-sales will accept cash, credit cards and checks.

**Thursday, May 2**, our Transportation team will be loading the tables and plant sale supplies from the Extension Annex and Punches Palace at the Discovery Garden into trailers and trucks to be ready to take them to the Fairgrounds on Friday morning.

**Friday, May 3** is a big day. Some jobs will be starting at 7:00 a.m. at the Fairgrounds with setup for the sale.

Then the majority of help comes at 8:00 to get the rest of the setup completed. It is pretty amazing how quickly this all comes together.

**Saturday, May 4 PLANT SALE DAY!!!!** This is the day we have all been working towards all year. A couple other items regarding Plant Sale include:

- We are bringing back the crazy hats! Not a contest, just another fun part of the Plant Sale and give our plant-loving customers an easy way to identify our volunteers at the sale. Your hat can be anything you want to decorate and if you need a hat, let Karin know because she has quiet a collection to share with you all.
- Sign-ups - Online sign-ups are progressing well. An email will be coming every 10-14 days through Shirley with the link to the sign-ups. This will continue until we close it down mid April. Please consider signing up for more than one job as we have positions available on both Friday and Saturday. It takes a lot of hands to pull this all together. (You can even sign up your spouse to help in non-plant-related areas such as setup, take-down, transportation etc.).
- Raffle - Please donate 'ready-to-go' raffle items – something you would like to win for your home or garden. Bring your raffle item, ready to display on the raffle table on Friday to the Fairgrounds. Raffle chairpersons Toni Rudolph and Diana Circle are retiring after this year – here is your chance to learn what it takes to manage the raffle and how much fun you can have at the Plant Sale.
- Vendors - Right now our vendor spaces are all spoken for thanks to the great work by Jen Bailey and Ann Severson.
- Publicity - Cheryl Caplan will be moving from Douglas County in just a few more days – but she leaves behind everything the new Publicity Chair needs to carry on. New banners are printed with the new OSU logo and flyers in two sizes are ready for anyone to drop off at their favorite hangout. Do you have a hankering to become a radio spokesperson for our Master

Gardener Plant Sale & Expo? Publicity contact information is available at your fingertips – contact Karin ([KarinSeder@gmail.com](mailto:KarinSeder@gmail.com)) to find out more about this exciting position.

- Potluck – we continue with our great potluck lunch on both Friday and Saturday and once again Barbie Hamby has stepped up to organize our potluck meals. Look for her reminder emails to bring something to share with the crew. Paper products will be available for your use, water, tea and coffee will also be available. We want our volunteers to be happy, hydrated and well fed!
- Another area we always need more volunteers is security. Dennis Moore is our chairperson and he needs individuals to help direct parking for plant pick-up and folks to monitor the entrances and exits. This might be a perfect spot to include your spouse or significant other in our Plant Sale. Check out the online sign ups or contact Karin or Joy: The link to the signup sheet is here:

<https://www.signupgenius.com/go/10C0F4FA5AB2EA4FBC16-47714902-2024>

We are looking forward to a great Plant Sale this year. Thanks for all your help.

Karin ([KarinSeder@sonic.net](mailto:KarinSeder@sonic.net))

Joy ([jlkeeling27@gmail.com](mailto:jlkeeling27@gmail.com))





## Pavilion Series

Lenore Drake & Sharon Bordeaux

Season opening class was a big hit!! On February 15th, community members and Master Gardeners made their way through the cold and rain to the Discovery Garden's Westside greenhouse, to learn about seeding peppers.



Master Gardner Bruce Gravens presented a very detailed and well-received class on the art of seeding peppers. There were 47 people in attendance. Bruce stressed the advantage of the variety of peppers you can grow when doing your own seed starts. He then described a number of different pepper varieties. The group was especially interested in the hot peppers. Bruce told them about one hot pepper that is so hot it can't be described in words. He said it is hard to get your breath after just one bite of this pepper.



Each class member, following directions, set 3 varieties of pepper seeds in a pot. The pots were taken home and the person can watch their seeds sprout.

A number of questions were asked that stimulated discussions with good participation by attendees. Logan Bennett was present and served as a resource for information. The written responses to the class were very positive and most attendees expressed an interest in future Pavilion classes. A schedule of classes will be sent to those who provided their email.

The next two classes are:

March 21 – Starting tomatoes from seed: grow your favorite varieties.

April 18 - Up-potting seedlings (both peppers and tomatoes)

Both will be taught by Bruce Gravens.

Thanks to Bruce for presenting a great class. Thanks also to Logan Bennett, and Cheryl Caplan for their assistance and for advertising this event. Also a big thank you to Carol Bolt for so graciously lending the Westside greenhouse for this event.

## “YARD CLIPPINGS” GATHERINGS OF THIS AND THAT

**JANET BITTER**

I saw this truck today loaded up with a big saguaro cactus that they are transplanting somewhere. I won't complain about transplanting anything in my yard again!



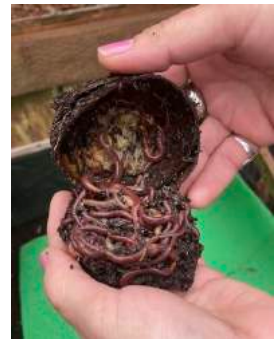
**FRED ALLEY**



Sandy just had to take this photo this afternoon. Smokey ALWAYS finds me when I sit in the Garden.

**DAWN SHUMACK**

If you seem to have an excess of kitchen scraps at home, please bring them with you when you visit the Discovery Garden and place them in one of the plastic containers in the middle worm bin. The scraps will be allowed to age and will be fed to the Worms. I periodically seem to be low in scraps, and am looking for fruits and vegetable scraps, no citrus or onions, please. They especially love any part of melons and avocados (as seen above). The worms and I thank you!



## DOUGLAS COUNTY MASTER GARDENERS

Chapter Meeting, Annex  
February 29, 2024

Continuing Education: Ann Severson on “Building a Greenhouse on a Budget”

## DOUGLAS COUNTY MASTER GARDENERS Chapter Meeting February 29, 2024

We all sang “Happy Birthday” today to Sarah Davis who is now 11 years old, another Leap Year Baby, along with Julie Stanbery, who is off celebrating her special day on the road.

**Call to Order:** The meeting was called to order by Vice-President Andrea Collins at 10:00. There were 42 in attendance, including Vice-President Andrea Collins, Past President Nancy Fuller, Secretary Bonnie Courter, OMGA Rep Patrice Sipos, Treasurer Dawnetta Loomis, and Membership Kay Livermore.

**Agenda Approval:** Add “Secretary” to agenda under Officer Reports

**Minutes Approval:** The minutes were approved as posted.

### OFFICER REPORTS

**Secretary - Bonnie Courter:** Just a reminder that if you are a chairperson, please review your job description in the Policies & Job Descriptions found under “Documents” on the website and let me know if there are any changes. The deadline is April 1.

**Past President - Nancy Fuller:** It was snowing and sticking at her house this morning.

**Membership - Kay Livermore:** We have a total of 216 members now. She also has OMGA cards to give out for a discount at Territorial Seed Co. There will be also some in the Plant Clinic drawer and in the mailbox outside the Eastside greenhouse.

**OMGA - Patrice Sipos:** She showed a draft flyer for Joy of Gardening 2024 Conference. Almost all classes have been put together. The conference is July 12-13 at



the OSU campus in Corvallis. Registration will begin April 1.

### Treasurer - Dawnetta Loomis:

•Fred Meyer Rewards - \$31.06 received so far. Please register to take part.  
•Vendors Booths - we've exceeded what we expected so far - over \$3000.

### Vice-President - Andrea Collins:

Ann Severson gave an excellent CE presentation on “Greenhouses on a Budget” before the meeting. The next CE will be by Leo Grass talking about different watering techniques.



Plans for our summer potluck meetings so far: Anna Kircher and Sara Davis have volunteered to host (months to be determined), and Patrice Glasscock will host in August. Carpooling will be necessary at all locations due to parking limitations.

### President - Julie Stanbery: Not present - her report:

- Thanks to everyone who helped me celebrate my youth at the Celebrate 2024 party. Those were the two best birthday cakes **ever!!!!**
- Reminder that for now we still must use paper timesheets. All volunteers are encouraged to turn in hours on a regular monthly basis.

### MG Program Coordinator - Logan Bennett:

- This Saturday at the Discovery Garden, he is giving a class on growing mushrooms.
- Spring Into Gardening is the next Saturday, March 2, and is filling up pretty fast.

- Will be doing composting in March. Ed Barrett will send out a specific date for that, and he will need helpers.
- Logan now has his own official MG badge.

## COMMITTEE REPORTS

**Black Apparel - Andrea Collins:** Black apparel, including sweatshirts, are available to order. She will send out the order form again through Shirley soon.

**Blue Bags - Dawn Shumack:** 20 bags were turned in for February. We've made \$814 so far this year. The new location for the scanner tag is near the middle of the bag, not the top, per request from the BottleDrop folks.

### Community Outreach - Dawn Shumack:

Please let Dawn know of any outreach events you do, so the info can be captured on the spreadsheet for Logan. Also put it on the back of your timesheets.

Sky Stefanich has volunteered to be on the Outreach team - thank you Sky!

#### Recent events:

- February 15th - Pavilion Series, class on starting peppers
- February 18th at Secret Wine Society, class on vegetable gardens

#### Upcoming events:

- March 2nd - Discovery Garden - class on growing mushrooms
- March 21st - Pavilion Series, class on starting tomatoes
- April 2nd - Rainbow Garden Club tour of Discovery Garden, greenhouses & Victory Garden
- April 19th - Discovery Garden tour for 3rd graders from Fullerton grade school
- May 20th - Container Gardens at Open People Connections in Roseburg.

Four volunteers are needed to help with the April 19th tour for Fullerton grade school - Julie Burchstead and Sarah Davis have volunteered so far - Thank you!

**Discovery Garden - Julie Stanbery:** Not present - her report:

- Very successful pruning sessions - thanks to those who come to work and learn.
- Final pruning session is for the Japanese Garden March 6, 1-3pm. There will be work days in March to spread chips, etc. - days to be announced.

**Facebook - Barbara Horst:** Not present - her report:

Here is the Facebook report for the last 28 days:

We have 2,743 followers.

Our posts have reached 13,311 people.

989 people engaged (liked or commented on) with our posts.

We have 51 new followers.

Most liked posts:

Pepper seed class 9,856

Plant sale vendors 4,724

Spring into Gardening 1,698

**Greenhouse West - Joy Keeling:** They are busy planting, seeding, transplanting, and cleaning. Some new MG's and the core group are working and doing an excellent job.

**Greenhouse East - Bonnie Durick:** Plants are looking really good for this time of year. We are up-potting all starts for the 2025 Plant Sale. Ann Severson wanted to thank Gloria, Linda, Jan and Stefani for helping with the succulents.

### Hallmark - Dawn Shumack:

- Garry Gerlach was sent a card wishing him a speedy recovery from prostate surgery.
- Dave Clark was sent a "thinking of you" card.
- Cheryl Caplan was given a "thank you/best wishes on your move" card, as she is moving out of State.

**Insect Committee - Diana Woodward:** Not present - her report: We have only met once this year, our next meeting will be on March 4th. We will continue to work on our drawers and insect notebook.

**Newsletter - Bonnie Courter:** Submissions are due this Saturday, March 2.

**Nominating Committee - Gloria Cettina:** Every year we elect a new Board. April-May we will take nominations and present the names to membership, then vote on the new Board in July. She is calling Board

members to see if they will continue on for another year or step down.

**Plant Clinic - Chris Rusch:** Not present - her report:

The Plant Clinic is starting to become busy; interesting garden questions continue to come in. The Plant Clinic is one of our DCMG programs that reach out to our community to help people solve a wide range of gardening and landscape questions. We are lucky to have a great team this year with Leo Grass, Gerry Crane, Chris Rusch, Ken Parry, and Doralee Hayden. Our training for the new class is ongoing. Trainees can sign up for their volunteer hours by calling, emailing or visiting the Plant Clinic. There are many openings available.

The Plant Clinic will continue our winter hours for March. We will staff the clinic on Mondays, Wednesdays, and Fridays from 1-4 PM.

**Plant Sale - Karin Seder:** We need more boxes. Also need garden-related raffle items. We need “shadows” to learn the raffle, checker, and publicity chairperson positions. Committee chairs will meet again March 20 in the Annex and on Zoom. MG’s can now sign up online to work at the sale. Toni Rudolph mentioned that Diana and she are retiring from Raffle. Bring raffle items on Friday at set up, making sure they’re ready to be displayed.

**Publicity - Cheryl Caplan:**

- Plant Sale - she ordered 6 new banners and Bean’s barn banner made at Prints Charming with our official logo on them. She will mark them with sizes and store in the “attic”.
- Cheryl is moving to Longview, Washington. She hopes to join Master Gardeners up there. We need someone to replace her. She brought her folders and large notebook with thumb drive and gave to Andrea to hold for her.
- She brought the Plant Sale flyers to distribute around the community and at Spring Into Gardening, and Shirley will send out a PDF of it to members.



Bonnie Courter presented Cheryl with a card from all of us made by Dawn Shumack, thanking her for her excellent service to DCMG and

wishing her the best on her move.

**Soils - Gloria Cettina:** The materials we ordered that have been backordered since the fall are not going to be available. We are researching other business options so we can do soil testing. Hopefully by next month we’ll have something in place. Might be totally revamping our testing.

**Spring Into Gardening - Chris Rusch:** Not present - her report:

Mark your Calendars for March 9, 2024! We have almost 70 people registered, well above our expectations! We have some amazing classes in store. This is a terrific community education event where we can bring our OSU Extension program on sustainable gardening to our greater community. It is also an opportunity for MG’s to get recertification hours by attending classes. Thanks to all the volunteers that have already signed up to help. We will meet Friday, March 8, at 4 PM at the Phoenix School for set-up. Saturday volunteers will need to arrive at 7:30 AM. I will be sending out an email to all volunteers on Friday. If you want to help with the event, please contact me. Thanks everyone!

**Swinger Bars - Kay Livermore:**

Members who have swinger bar updates for January:

100 hours: Sarah Davis

1000 hours: Earnest Amabisca

5500 hours: Chris Rusch

Members who have year bars or updates through December 2023:

- 5 years: Christian Andino, Sylvia Andino, Julie Bell, Debbie Bishop, Cheryl Caplan, Jennie Compton, Darrell Dollens, Larisa Dollens, Jack Finney, Gordon Fleig, Chuck Goodin, Dawnetta Loomis, Brian McCrea, Robin Oki, Kim Pleich, Larry Rich, Bobbi Schneider, Mary Ann Shea, Jan Turley, Jan Wildey
- 10 years: Anne Bacon, Ivor Chapman, Kish Doyle, Bonnie Durick, Karen Glatz, Bruce Gravens, Kathy Hart, Steve Hart, Marsha McLain
- 15 years: Beth Brown, Carol Dalu, Neal Meyer, Tami Morin, Barbara Robinson, Gale Robinson, Toni Rudolph
- 20 years: Janet Bitter, Jean DeCato, Debbie Fenzl, Doug Holloway, Jon Thran

**Trash to Treasure - Ann Severson:** Lots of donations are coming in. \$5200 is the goal for her and Logan to perform something special. Ann knows we will exceed that. Leave donations at the greenhouse or her home. June 1 is the sale (come at 8:00), set up is May 31 at 10:00. We will need many truck drivers at 8:00 Friday to transport the donations to the Community Center. No signups beforehand - just show up. We will have a table for "high end" donations this year.

**Vermicomposting - Dawn Shumack:** Steve Hart replaced the hinges on the bins. I ran short on food for the worms. There are plastic containers with lids inside the bins - please place your food waste in them.

**Victory Garden - Carolyn Ruzicka:** Last Tuesday was the first work day. We had 2 new trainees join us. We weeded and prepared beds for the onions and planted lots of them. Cabbage should be ready in 2-3 weeks. I will send out emails when we will work again.

**OLD BUSINESS:** This from Julie: "Do the members agree that the garden tour guides from the League of Women Voters and the musicians on site will have access to the bathrooms? I recommend that the MG volunteer who is working the event keep the bathrooms locked until needed by a volunteer. The concern is that the bathrooms will be overwhelmed by public use if left open during the day."

After some discussion, everyone felt we should provide a porta potty for everyone on the tour. It was also suggested we have a little stand next to it with MG information to distribute.

**NEW BUSINESS:** None

**SHOW AND TELL:**

Kay Livermore - has a red daisy blooming at her new house. She has a picture of it to identify.  
Dawn Shumack brought some bulbs to give away.

**ANNOUNCEMENTS:**

Executive Meeting, March 13 at 10:00 at the Annex

**ADJOURNMENT:** The meeting was adjourned at 11:02.

Respectfully submitted,  
Bonnie Courter, Secretary



All daffodil photos in this Newsletter are by Fred Alley



# Douglas County Master Gardeners

Newsletter: E-mail submissions to Bonnie Courter: [rbcourter@gmail.com](mailto:rbcourter@gmail.com)

Website: [www.douglascountymg.org](http://www.douglascountymg.org)

Facebook Page: [www.facebook.com/douglascountymgs](http://www.facebook.com/douglascountymgs)

OSU Douglas County Extension Service: [extension.oregonstate.edu/douglas](http://extension.oregonstate.edu/douglas)

OSU Gardening Information: [extension.oregonstate.edu/gardening](http://extension.oregonstate.edu/gardening)

OSU Master Gardeners Program: [extension.oregonstate.edu/mg](http://extension.oregonstate.edu/mg)

Oregon Master Gardeners Association (OMGA): [omga.org](http://omga.org)



**Oregon State University**  
Extension Service  
Master Gardener

Oregon State University Extension Service prohibits discrimination in all its programs, services, activities, and materials on this basis of race, color, national origin, religion, sex, gender identity (including gender expression), sexual orientation, disability, age, marital status, familial/parental status, income derived from a public assistance program, political beliefs, genetic information, veteran's status, reprisal or retaliation for prior civil rights activity. (Not all prohibited bases apply to all programs.) If you have a physical disability that requires special considerations in order for

you to attend an event, please notify the office at 541-672-4461 no later than 2 weeks prior to event date. This publication will be made available in an accessible alternative format upon request. Please contact Bonnie Courter, [rbcourter@gmail.com](mailto:rbcourter@gmail.com).

Douglas County Master Gardeners  
PO BOX 1165  
Roseburg OR 97470  
Ph: 541-672-4461